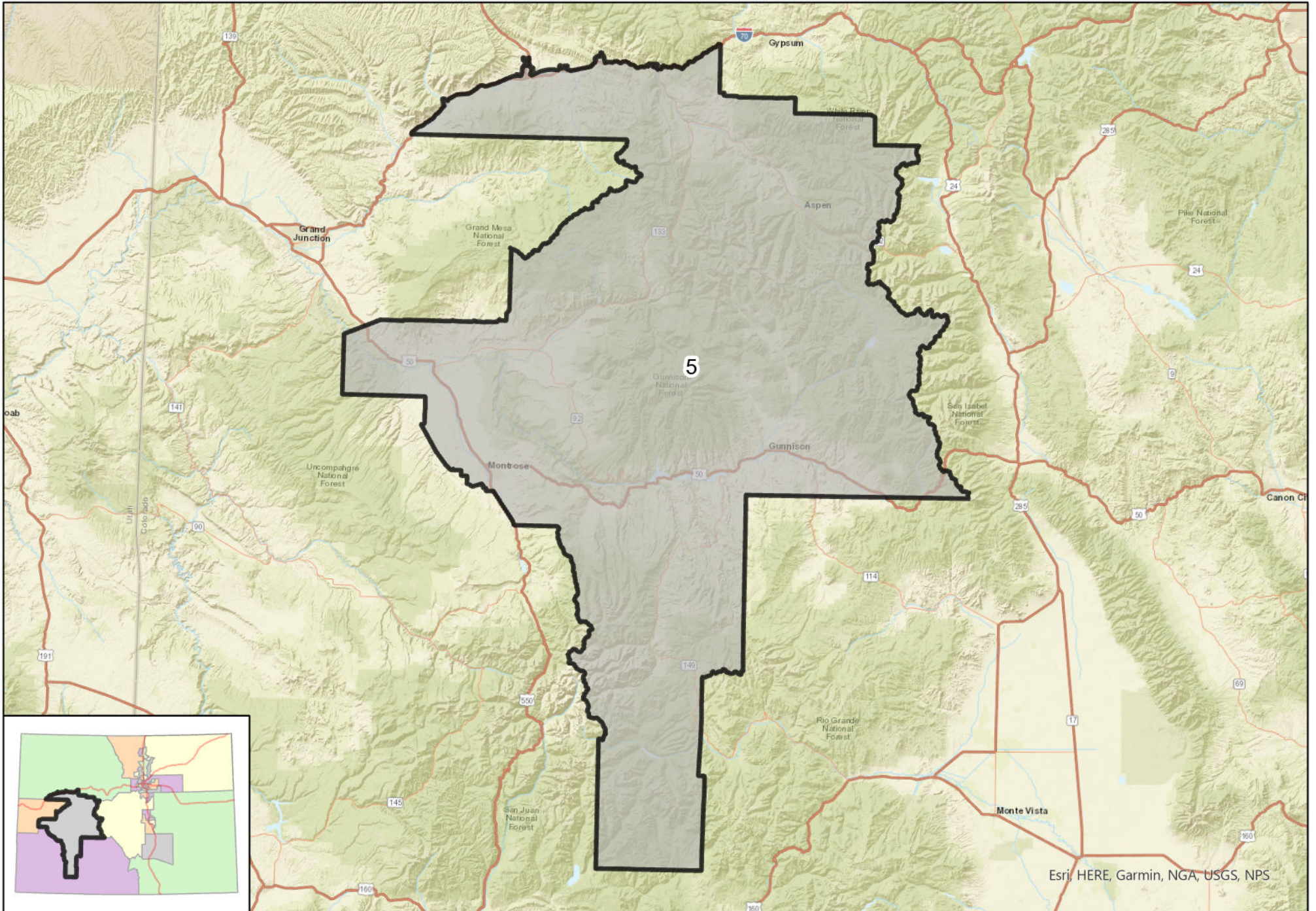
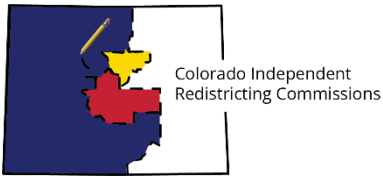


Colorado Senate District 5 (2021)



Map prepared by Colorado Independent Redistricting Commissions Staff.

This map reflects minor map adjustments requested by the Colorado Secretary of State and county clerks, as approved by the Colorado Supreme Court on March 18, 2022.



Colorado Senate District 5

2022-2031

Total Population (2020 Census): 163,326

| Race | Percent |
|---|---------|
| White | 76.3% |
| Black or African American | 0.5% |
| American Indian or Alaska Native | 1.2% |
| Asian | 0.9% |
| Native Hawaiian or Other Pacific Islander | 0.1% |
| Some Other Race | 10.4% |
| Multiracial | 10.6% |

| Ethnicity | Percent |
|------------------------|---------|
| Hispanic or Latino | 22.4% |
| Not Hispanic or Latino | 77.6% |

Voting Age Population: 127,854

Housing Units: 80,681

Percent Occupied: 80.8%

Percent Vacant: 19.2%

Congressional Districts: 3

State House Districts: 26, 54, 57, 58

Counties:

- Delta
- Eagle
- Garfield
- Gunnison
- Hinsdale
- Montrose
- Pitkin

Largest Municipalities and Communities:

- Montrose
- Rifle
- Glenwood Springs
- Delta
- Aspen

School Districts:

School districts with more than 3% of their area in the senate district are included in this list.

- Archuleta, Aspen, Delta, Gunnison, Hinsdale, Montrose, Parachute, Rifle, Roaring Fork

Registered Voters: 106,931

(active as of September 1, 2022)

| Affiliation | Voters | Percent |
|--------------|--------|---------|
| Democrat | 23,127 | 21.6% |
| Republican | 31,444 | 29.4% |
| Minor Party | 1,892 | 1.8% |
| Unaffiliated | 50,468 | 47.2% |

Election Differentials:

The commission analyzed the results of eight recent elections, three of which are included here, and reported results in each district as the difference between the percent of votes cast for the Republican candidate and the percent of votes cast for the Democratic candidate. A positive differential means the Republican would have won in the district, and a negative differential means the Democrat would have won in the district.

| Election | Differential |
|---|--------------|
| 2020 U.S. Senate <i>Hickenlooper (D) / Gardner (R)</i> | 3.1% |
| 2018 Treasurer <i>Young (D) / Watson (R)</i> | 3.6% |
| 2016 President <i>Clinton (D) / Trump (R)</i> | 8.8% |